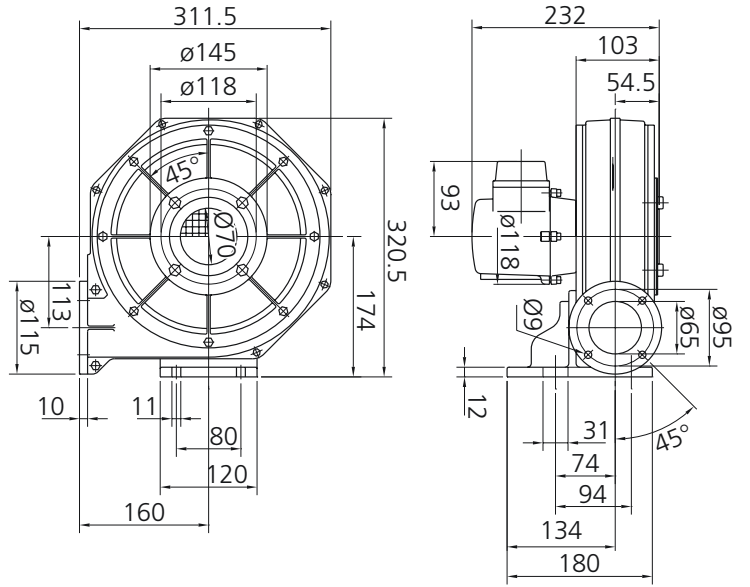


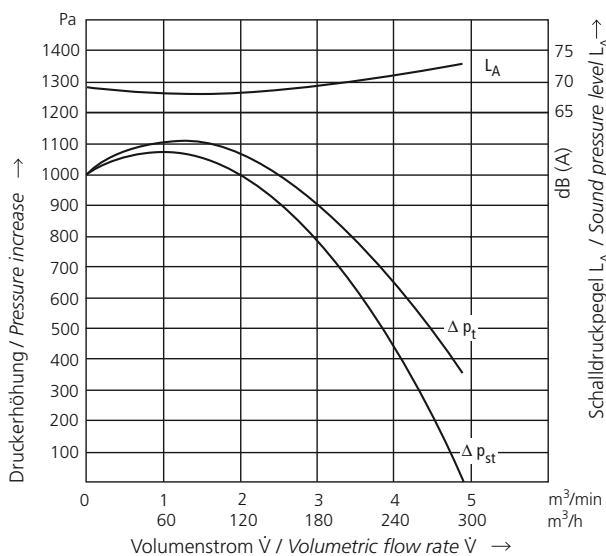
RD 10, RE 10



Maße in mm – unverbindlich
Dimensions in mm – subject to modifications

Typ	Volumenstrom	Gesamtdruckdifferenz	Spannung	Frequenz	Stromaufnahme	Drehzahl	Motorleistung	Kondensator	Gewicht
Type	Volumetric flow rate	Total pressure difference	Voltage	Frequency	Current consumption	Number of revolutions	Motor rating	Capacitor	Weight
	m ³ /min	Pa	V	Hz	A	min ⁻¹	kW	μF/V	kg
RD 10	4,9	1000	230/400	50	0,55/0,32	2750	0,075	–	8,5
RD 10	5,2	1200	277/480	60	0,61/0,35	3210	0,11	–	8,5
RE 10	4,8	1000	230	50	0,65	2700	0,075	8/450	8,6
RE 10	5,1	1200	230	60	0,85	3280	0,10	8/450	8,6

50 Hz



60 Hz

